

18th September 2023

Dear parents/carers

A warm welcome back to the new academic year, 2023-2024. I would like to start my first letter of the year by congratulating the class of 2023 on their fantastic GCSE results, which for most pupils showed the result of their hard work and determination. We have had a great start to the new school year with pupils in their smart uniforms, eager to learn and be the best they can be. It is every child's right to have disruption free learning, therefore we have amended our procedures to facilitate this. We have excellent behaviour in our school which is always commented on by all our visitors. To continue getting even better, we amend our policies and procedures from time to time. All your children have been reminded of our expectations and the 'why' for them.

Over the past few years, we have amended our routines to take into account what our pupils concerns and worries were. In the table below, I have summarised some of our routines and the reasons for them. Embedded routines reduce cognitive load on your child and reduces any confusion and uncertainty which might result in anxiety.

Routines – Why we do them

How we move around the school	Line up	Social Time
Calm corridors Calm manner No running	Single file Straight line Feet facing forward When: morning, after break and after lunch As the pastoral leaders and teachers raise their hand, we raise our hand and stand in silence	Family lunch (only 20 minutes of 45-minute lunch)

Why?	Why?	Why?
<p>To keep everyone safe</p> <p>To reduce anxiety in busy areas</p> <p>To ensure that we are supporting all pupils with transitions to lessons</p> <p>To support a strong start to lessons</p>	<p>To ensure that pupils can enter the school and buildings safely and in line with school expectations and values</p> <p>It reduces our lates to lessons</p> <p>It supports a strong start to our lessons</p> <p>To ensure you have someone to talk to first thing in the morning</p> <p>Raising our hand reduces the need for shouting and raised voices and creates a much calmer environment</p>	<p>The purpose of the family lunch is to continue to develop our culture of school being a family community that supports one another</p> <p>We want our pupils to experience the sitting at a table, dining together and the etiquette and social norms attached to this</p> <p>We want our pupils to engage in those dinner time conversations, discussing topical issues</p>

To eliminate any disruption to learning, pupils will have clear classroom routines which were shared with them at the start of the term. They will be given one chance to correct their disruptive behaviour (D1- Move), if the disruptive behaviour continues, they will be removed from the lesson (D2-Remove) and will be taken to the Reflection room. The table below summarises the process:

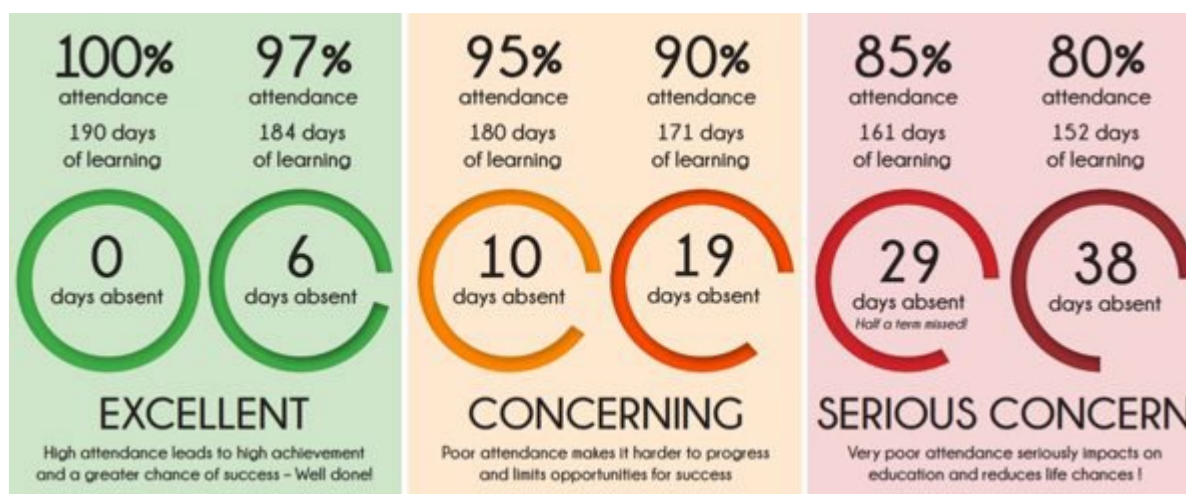
Raveloe Drive
 Nuneaton
 CV11 4QP
 02476 744 000
 infoGEA@midlandat.co.uk
 www.georgeeliot.midlandat.co.uk
 Principal: Homeira Zakary

D2 Removal Process

Step 1	Step 2	Step 3	Step 4
Collected from lesson by 'on-call' Duty staff No conversation regarding the removal so that the lesson is not interrupted	Pupils is taken to the Reflection room SEND plans/behaviour plans followed to ensure pupils are Reflection room ready	Behaviour Manager contacts parent and notifies them that their child is in the Reflection room. No reason will be given at this stage Pupil completes work in line with curriculum, this is returned to the teacher	Teacher updates Class Charts after school to explain the reason for removal Subject teacher will call or email home and notify of the removal

I would like to take this opportunity to share our expectations in relation to your child's attendance. All pupils must be at school by 8.30 to allow them time to get to their line-up. We expect all pupils to attend the school every day as missing one day of the school is missing 6 periods of learning. We expect all our pupils to have attendance of above 95%. Please see the table below which demonstrates the learning lost in relation to days missed from the school

What is good attendance?





**George Eliot
Academy**

Part of The Midland Academies Trust

Raveloe Drive
Nuneaton
CV11 4QP

02476 744 000

infoGEA@midlandat.co.uk

www.georgeeliot.midlandat.co.uk

Principal: Homeira Zakary

Your child's Settling In Evening is next week, Thursday 28th September 2023. This session is with your child's tutor and you will have the opportunity to discuss any issues or support you might need. The senior leadership team will also be present if you wish to discuss any concerns and have a chat.

We have always been proud of our community and our family ethos, how we all help each other. Please communicate with us before you go on social media and air your concerns to those who cannot help. We are a family and support and learn from each other. If you are not sure who you need to contact, please contact the school via infoGEA@midlandat.co.uk and this will then be forwarded to the member of staff best placed to resolve any concern you have.

A reminder to you all that we do have our website and our Twitter/(X) accounts which are excellent ways of keeping up with the day-to-day life of the school. If you do not already do so, please follow us on Twitter/(X) at George Eliot Academy @GeorgeEliot Acad.

As a school, we thank you all in advance for being fully supportive of the changes. Our updated behaviour policy will be on our website later this month.

I look forward to seeing you all next week.

Yours sincerely

Mrs Homeira Zakary
Principal