

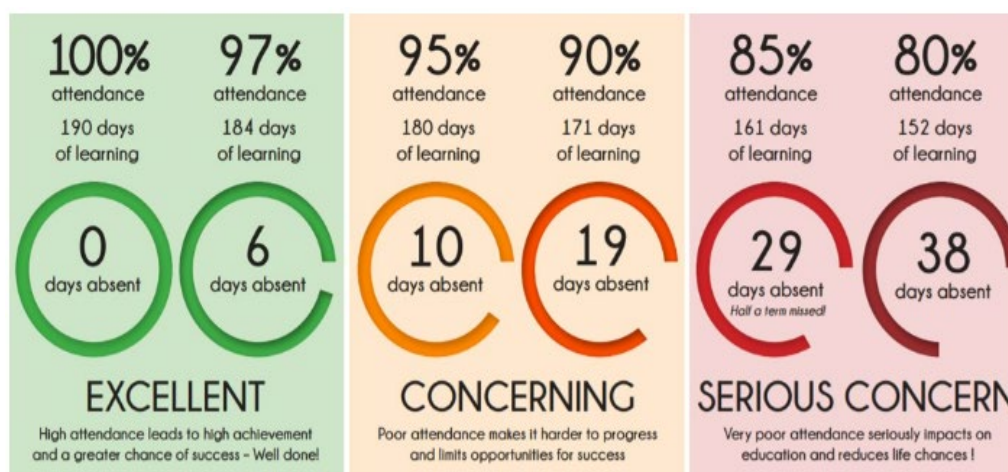
10th November 2023

Dear Parents/Carers

Raveloe Drive
Nuneaton
CV11 4QP
02476 744 000
infoGEA@midlandat.co.uk
www.georgeeliot.midlandat.co.uk
Principal: Homeira Zakary

We are writing to explain how attendance is monitored at the George Eliot Academy, and what your child's attendance means for their future. The school attendance process is run as a staged process, details of which can be found on our website as well as our expectations for attendance.

Good attendance is classed as between 97% and 100%. Anything below this becomes a cause for concern. The reason for this is the direct link between a child's attendance and their attainment. Attendance at 90% results in a loss of 19 days over the course of one year and, and a half a year in lost education over 5 years spent at secondary school. This has been shown to cause a drop in one grade in every GCSE taken by these pupils. It is for these reasons that the George Eliot Academy encourages all of its pupils to attend and requests that parents support us in ensuring that they do so every single day.



May I also take this opportunity to remind you that any absence should be reported to the school every day. This is the same as it is in the workplace. Any non-reporting will result in a text home and a call from the pastoral team to ascertain why your child is not in school. This is carried out for safeguarding reasons to ensure your child's safety, which is paramount to us. Thank you for your support.

Yours sincerely

Dr G Koutsou
Associate Assistant Principal

Ms Lucy Havard
Vice Principal